

# NEOVEIL™



Official Exclusive Distributor

 tacmedmedikal  tacmedmedikal  tacmedmedikal

**REINFORCEMENT PGA FELT**

# GUNZE



**NEOVEIL™ Tube type**

**FOR OPEN & THORACOSCOPIC SURGERY**

**NEOVEIL™ Sheet type**



# NEOVEIL™

What is NEOVEIL?

100%  
PGA

BIO-  
ABSORBABLE

SOFT  
TISSUE  
REINFORCEMENT  
MATERIAL

The intended use of **NEOVEIL™** is to

**REINFORCE SUTURED AREAS**

## ADVANTAGES



**PREVENTING  
AIR LEAKAGE**

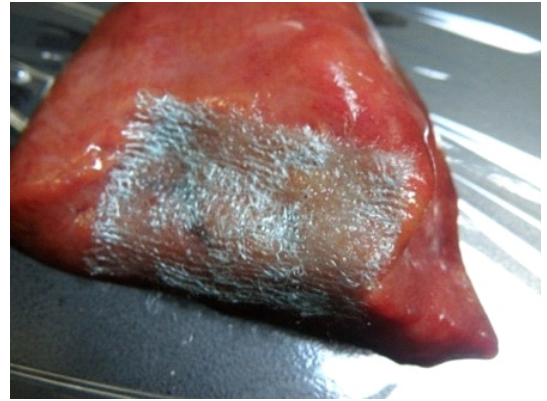


**PREVENTING  
FLUID LEAKAGE**

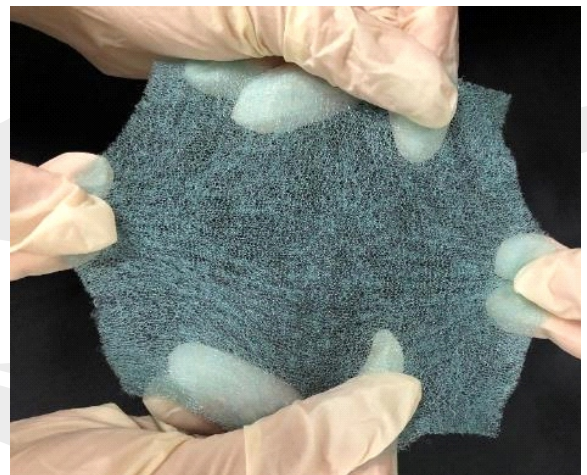


**PREVENTING  
FISTULA**

# NEOVEIL Sheet Type

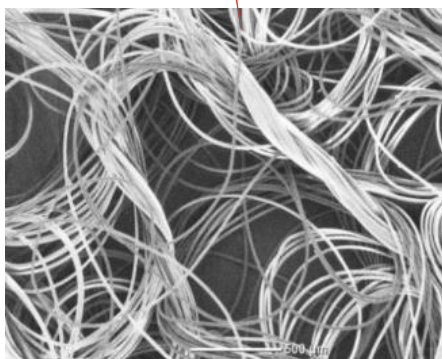
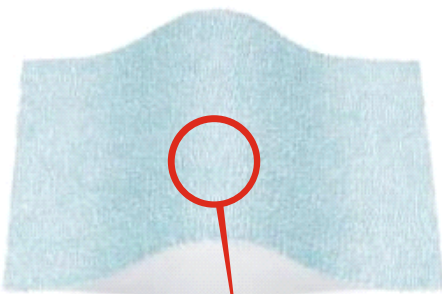


- Composition
  - PGA (Polyglycolic acid); 100% synthetic material
  - Softness & flexibility follow the swelling of the lungs



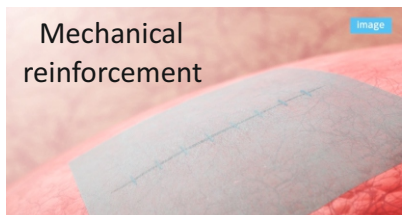
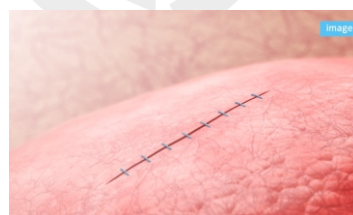
## NEOVEIL is Bioabsorbable Material

- Scaffolding for regeneration concept



Scanning electron microscope ( X 50)

NEOVEIL™ is applied.



Mechanical reinforcement

Cells such as inflammatory cells infiltrate, fibers work as scaffold for granulation tissue formation



Integrating Into Tissue in 1 week

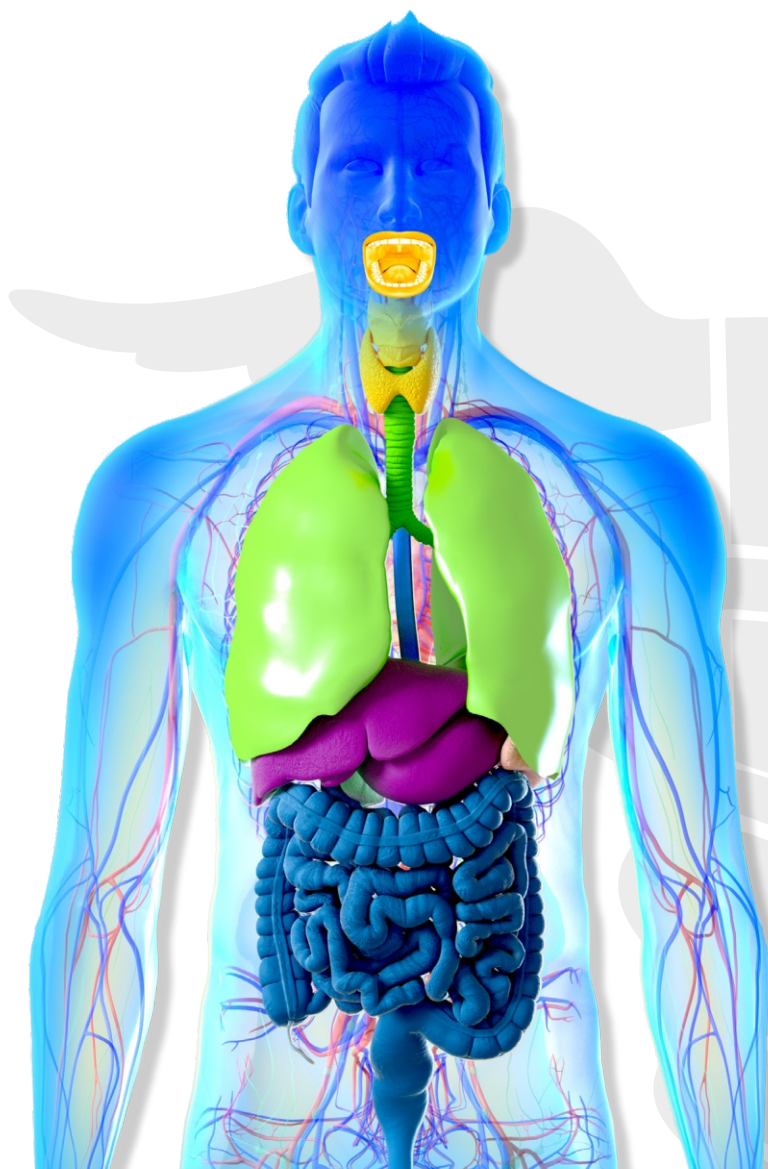


Histological Reinforcement 15 weeks

NEOVEIL™ is gradually replaced by autologous tissue with accompanying degradation, tissue is reinforced by thickening of itself

NEOVEIL™ has been used successfully in various areas of the body.  
Ask the GUNZE Team for case reports to get more information.  
Make sure to consult the IFU before application.

## Usable all over the human body



ENT, Oral & Maxillofacial surgery

Thoracic surgery

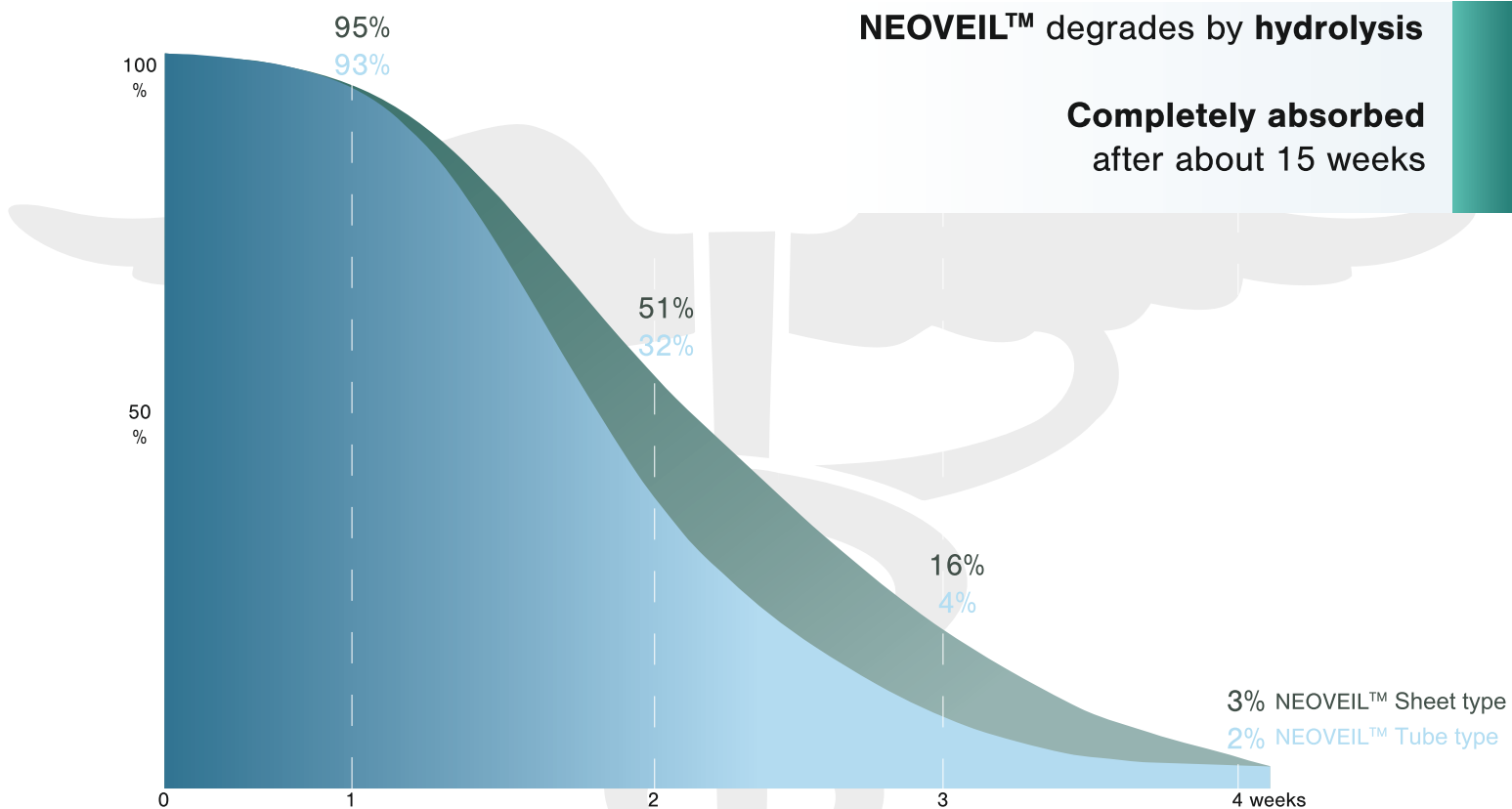
Hepatobiliary & Pancreatic surgery

ESD (Endoscopic submucosal dissection)

### Indications:

- |            |  |
|------------|--|
| Sheet type | <ol style="list-style-type: none"><li>1. <b>Reinforcement</b> for regions of soft tissues /organs in thoracic, abdominal and oral surgery.</li><li>2. <b>Prevention</b> of air leakage from the lung, bronchi and diaphragm, where such prevention is difficult to perform by only using sutures or surgical staplers.</li></ol> |
| Tube type  | <ol style="list-style-type: none"><li>1. <b>Reinforcement</b> for regions of soft tissues /organs in thoracic and abdominal surgery.</li><li>2. <b>Prevention</b> of air leakage from the lung, bronchi and diaphragm, where such prevention is difficult to perform by only using surgical staplers.</li></ol>                  |

## Retention of strength



### Did you know...

JAPAN

...that NEOVEIL™ is manufactured 100% in Japan?

1.95  
MILLION

Total sales from 1992 to Sep. 2019  
= **1,947,000 pieces**

0.0003%

Rate of complaints reported to the authorities was **0.000308%**  
= **6 cases from 1992**

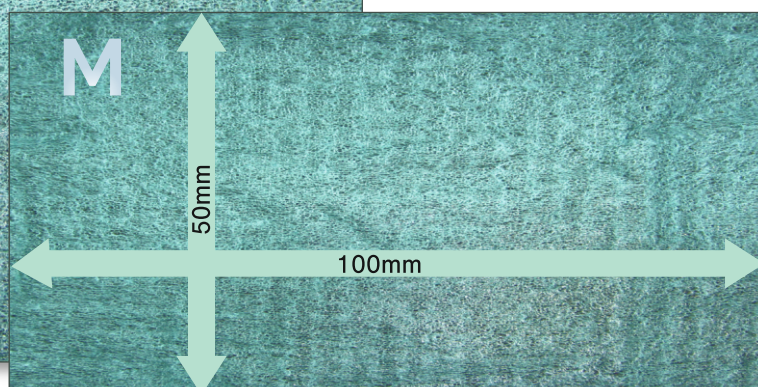
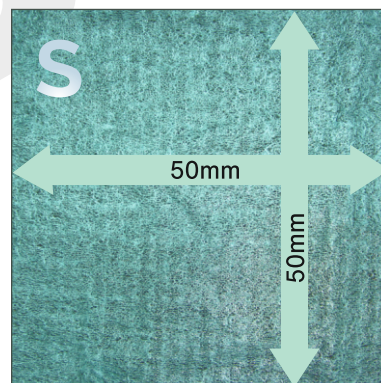
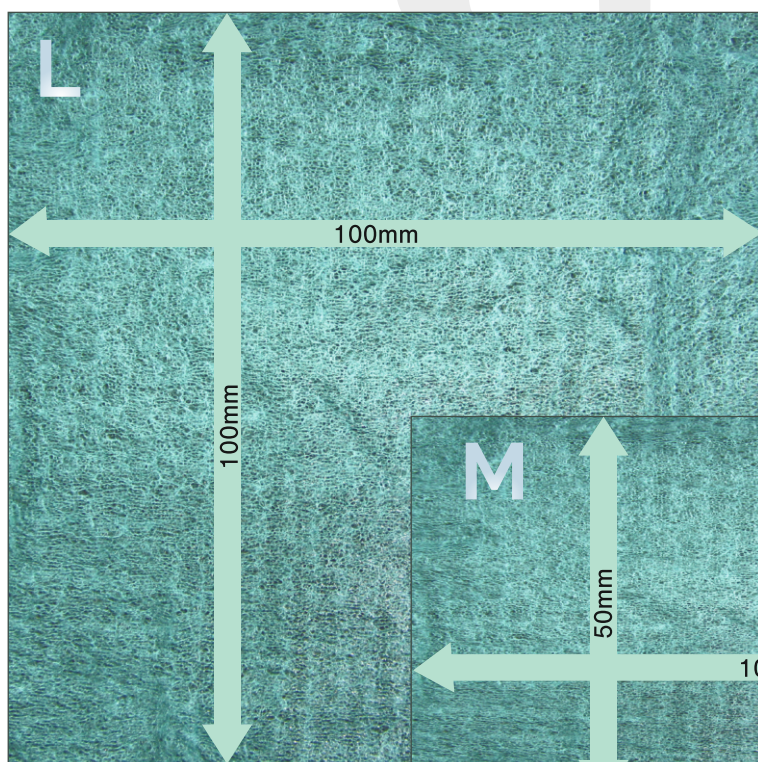
# Product Variation NEOVEIL™ Sheet type

NEOVEIL™ is green, which makes it easy to distinguish from clinical tissues.

Code	Size
NV-L-04G	100 x 100 x 0.4 mm
NV-L-03G	100 x 100 x 0.3 mm
NV-L-015G	100 x 100 x 0.15 mm
NV-M-04G	100 x 50 x 0.4 mm
NV-M-03G	100 x 50 x 0.3 mm
NV-M-015G	100 x 50 x 0.15 mm
NV-S-04G	50 x 50 x 0.4 mm
NV-S-03G	50 x 50 x 0.3 mm



1 sheet / box



1:1 scale

## Product Variation NEOVEIL™ Tube type

### (1) For Open Surgery

Code	Supported stapler models
NV-T-M60-R	[Johnson & Johnson] PROXIMATE 55mm Linear Cutter
	[Medtronic] MULTIFIRE GIA 60 Cartridge
	[Medtronic] GIA 60 Cartridge
NV-T-M80-R	[Johnson & Johnson] PROXIMATE 75mm Linear Cutter
	[Medtronic] MULTIFIRE GIA 80 Cartridge
	[Medtronic] GIA 80 Cartridge
NV-T-M90-R	[Medtronic] GIA 90P Cartridge



1 set / box

### (2) For Thoracoscopic Surgery

Code	Supported stapler models
NV-ET-M45E-2	[Johnson & Johnson] ECHELON ENDOPATH 45mm Stapler
	[Johnson & Johnson] ECHELON FLEX ENDOPATH 45mm Stapler
	[Johnson & Johnson] ECHELON FLEX Powered ENDOPATH 45mm Stapler
	[Medtronic] ENDO GIA II 45 Cartridge (Green)
	[Medtronic] ENDO GIA Reticulator 45 Cartridge (Green)
NV-ET-M60E-2	[Medtronic] ENDO GIA 45mm Articulating Extra-Thick Reload with Tri-Staple Technology (Black)
	[Johnson & Johnson] ECHELON ENDOPATH 60mm Stapler
	[Johnson & Johnson] ECHELON FLEX ENDOPATH 60mm Stapler
	[Johnson & Johnson] ECHELON FLEX Powered ENDOPATH 60mm Stapler
	[Medtronic] ENDO GIA II 60 Cartridge (Green)
NV-ET-M45A-2	[Medtronic] ENDO GIA Reticulator 60 Cartridge (Green)
	[Medtronic] ENDO GIA 60mm Articulating Extra-Thick Reload with Tri-Staple Technology (Black)
	[Medtronic] ENDO GIA II 45 Cartridge (Blue, White, Gray)
	[Medtronic] ENDO GIA Reticulator 45 Cartridge (Blue, White, Gray)
	[Medtronic] ENDO GIA 45mm Articulating Medium/Thick Reload with Tri-Staple Technology (Purple)
NV-ET-M60A-2	[Medtronic] ENDO GIA 45mm Articulating Vascular/Medium Reload with Tri-Staple Technology (Tan)
	[Medtronic] ENDO GIA 45mm Articulating Vascular Reload with Tri-Staple Technology (Gray)
	[Medtronic] ENDO GIA II 60 Cartridge (Blue, White)
	[Medtronic] ENDO GIA Reticulator 60 Cartridge (Blue, White)
	[Medtronic] ENDO GIA 60mm Articulating Medium/Thick Reload with Tri-Staple Technology (Purple)
NV-ET-M45EZ-R	[Medtronic] ENDO GIA 60mm Articulating Vascular/Medium Reload with Tri-Staple Technology (Tan)
	[Medtronic] ENDO GIA 60mm Articulating Vascular Reload with Tri-Staple Technology (Gray)
	[Johnson & Johnson] EZ 45mm Endocutter (Blue, Green)
	[Johnson & Johnson] ETS 45mm Endocutter
	[Johnson & Johnson] ETS Flex 45mm Endocutter
NV-ET-M30A-R	[Johnson & Johnson] ETS Compact-Flex 45mm Endocutter
	[Medtronic] ENDO GIA II 30 Cartridge
	[Medtronic] ENDO GIA Reticulator 30 Cartridge
NV-ET-M30AI-R	[Medtronic] ENDO GIA 30 Cartridge
NV-ET-M60AI-R	[Medtronic] ENDO GIA 60 Cartridge

The color in parentheses is the color of the cartridge attached to the stapler. It is not the color of NEOVEIL™.



# GUNZE

NEOVEIL™ Sheet type  
Product video



**TacMed**

İnş. San. Tic. Ltd. Şti.  
Official Exclusive Distributor

Tel : +90 232 449 00 47 • +90 533 386 26 91

Gaziler Caddesi Yenişehir Mah. No:341/G Konak-İZMİR

[www.tacmedmedikal.com](http://www.tacmedmedikal.com)

[info@tacmedmedikal.com](mailto:info@tacmedmedikal.com)



[tacmedmedikal](https://www.instagram.com/tacmedmedikal) [tacmedmedikal](https://www.linkedin.com/company/tacmedmedikal) [tacmedmedikal](https://www.youtube.com/channel/UC...)

## GUNZE

GUNZE LIMITED. Medical Division  
<https://www.gunze.co.jp/e/medical/>

### Japan

#### TOKYO OFFICE

TOKYO SHIODOME BUILDING, 1-9-1 Higashi-Shimbashi,  
Minato-ku, Tokyo 105-7315, Japan

Tel: +81-3-4485-0007 Fax: +81-3-4485-0040

#### AYABE FACTORY

46, Natsumegaichi, Aono, Ayabe, KYOTO 623-8513, Japan

NEOVEIL™ Tube type  
Product video

